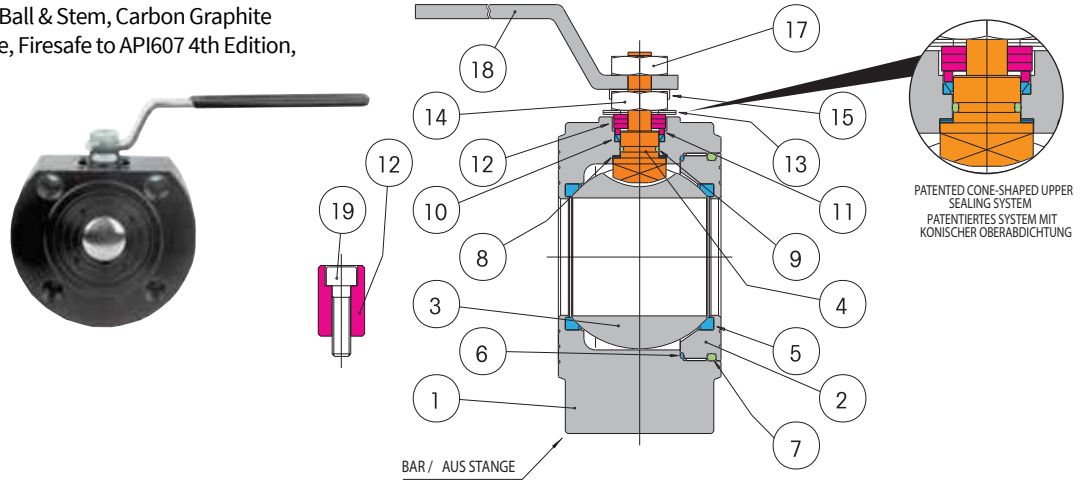


YC 8061
YC 8065

Carbon Steel Wafer Pattern Ball Valves – LV 8061 PN 16 – LV 8065 ANSI 150

Carbon Steel Body, Stainless Steel Ball & Stem, Carbon Graphite Filled PTFE Seats, Anti-Static Device, Firesafe to API607 4th Edition, Lever Operated

Temperature -40°C to 200°C

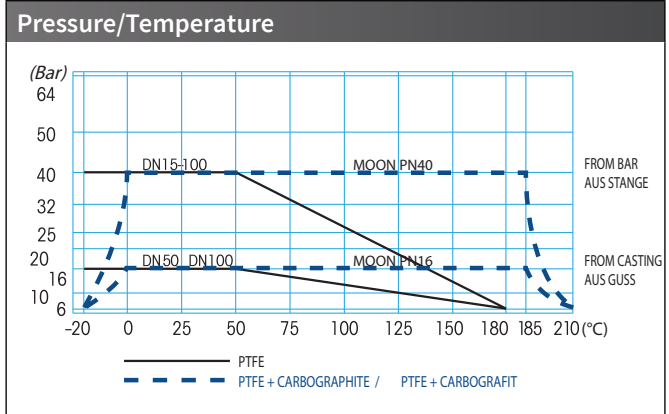
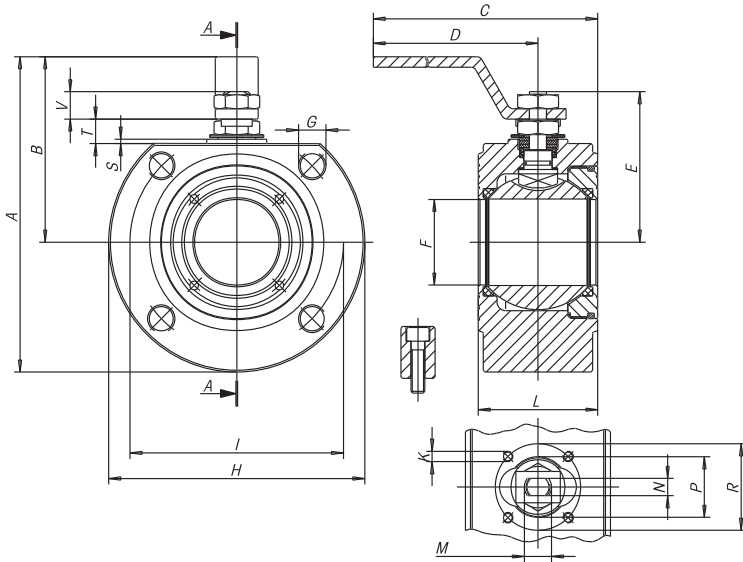


| Material List | | | | | |
|---------------|--------------------|-------------------|----|----------------------|----------|
| No | Part | Material | No | Part | Material |
| 1 | Body | A105 | 10 | Upper Sealing Couple | PTFE |
| 2 | Ring Nut | A105 | 11 | Gland Washer | AISI 304 |
| 3 | Ball | AISI 316/AISI 304 | 12 | Stop | AISI 304 |
| 4 | Stem | AISI 304 | 13 | Belleville Washers | 50CrV4 |
| 5 | Seat | PTFE | 14 | Stem Retaining Nut | C.S. |
| 6 | Side Sealing Ring | PTFE | 15 | Fixing Nut Plate | AISI 304 |
| 7 | O-Ring | NBR | 17 | Locking Nut | C.S. |
| 8 | Upper Sealing Ring | PTFE | 18 | Lever | C.S. |
| 9 | Stem O-Ring | VITON | 19 | Stop Screw | C.S. |

Continued on next page

YC 8061
YC 8065

Carbon Steel Wafer Pattern Ball Valves – LV 8061 PN 16 – LV 8065 ANSI 150



Dimensions

| Size | A | B | C | D | E | F | G | H | K | I | LPN 16/40 | LNDPN 16/40 | M | N | P | R | S | T | V | N° G | PN | ATT. ISO | Grams | Kv |
|-------|-----|-------|-----|-----|-------|----|-----|-----|-----|-----|--------------|----------------|-----|----|------|-----|------|------|------|------|----|----------|-------|------|
| DN25 | 137 | 82.0 | 200 | 180 | 62.5 | 25 | M12 | 110 | M5 | 85 | 43 | 43 | M12 | 8 | 30.0 | 42 | 2.00 | 11.5 | 11.5 | 4 | 40 | F04 | 2505 | 100 |
| DN32 | 150 | 85.0 | 205 | 180 | 67.0 | 32 | M16 | 130 | M5 | 100 | 54 | 54 | M12 | 8 | 30.0 | 42 | 2.00 | 9.50 | 11.5 | 4 | 40 | F04 | 3995 | 130 |
| DN40 | 172 | 102.0 | 260 | 230 | 80.0 | 40 | M16 | 150 | M6 | 110 | 60 | 66 | M16 | 10 | 35.0 | 50 | 2.50 | 14.0 | 16.0 | 4 | 40 | F05 | 5540 | 170 |
| DN50 | 185 | 110.0 | 265 | 230 | 87.0 | 50 | M16 | 165 | M6 | 125 | 70 | 83 | M16 | 10 | 35.0 | 50 | 2.50 | 14.0 | 16.0 | 4 | 40 | F05 | 7300 | 280 |
| DN65 | 225 | 137.5 | 400 | 350 | 119.5 | 65 | M16 | 175 | M8 | 145 | 95 | 103 | M22 | 14 | 49.5 | 70 | 3.00 | 18.7 | 20.8 | 4 | 16 | F07 | 15000 | 510 |
| DN80 | 245 | 150.0 | 410 | 350 | 129.5 | 78 | M16 | 190 | M8 | 160 | 122 | 122 | M22 | 14 | 49.5 | 70 | 3.00 | 18.7 | 20.8 | 4 | 40 | F07 | 19500 | 770 |
| DN100 | 275 | 165.0 | 580 | 508 | 148.5 | 96 | M16 | 220 | M10 | 180 | 140 | 153 | M27 | 16 | 70.0 | 102 | 3.00 | 22.2 | 25.3 | 8 | 16 | F10 | 31500 | 1200 |

Breakaway Torques in Nm

| Size | PN 0 | PN 16 | PN 25 | PN 40 |
|-------|------|-------|-------|-------|
| DN25 | 10.0 | 11.3 | 12.0 | 13.0 |
| DN32 | 16.0 | 19.0 | 20.5 | 22.5 |
| DN40 | 25.0 | 28.0 | 29.5 | 31.5 |
| DN50 | 35.0 | 39.0 | 41.5 | 44.0 |
| DN65 | 55.0 | 59.0 | 62.5 | 67.0 |
| DN80 | 75.0 | 84.5 | 92.0 | 99.0 |
| DN100 | 150 | 168 | 180 | 195 |

The values in Nm may vary depending on the seat material, temperature and type of fluid. For reliable operation of various types of actuators, in different working conditions, is recommended a safety factor of 1.5.

Drilling UNI-EN 1092

| Size | A | B (PN 40) | C (PN 16) |
|-------|-----|-----------|-----------|
| DN15 | M12 | 14 | 0 |
| DN20 | M12 | 16 | 0 |
| DN25 | M12 | 16 | 0 |
| DN32 | M16 | 18 | 0 |
| DN40 | M16 | 18 | 13 |
| DN50 | M16 | 18 | 15 |
| DN65 | M16 | 20 | 15 |
| DN80 | M16 | 24 | 17 |
| DN100 | M16 | 20 | 17 |

